

# How do I wear a mask?



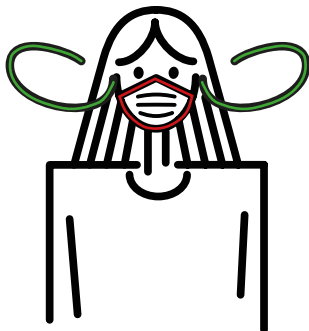
1. Wash or disinfect your hands before putting it on.

2. Place the mask over your mouth and nose.



3. Do not touch the mask while you are wearing it.

4. Change the mask when it becomes damp.



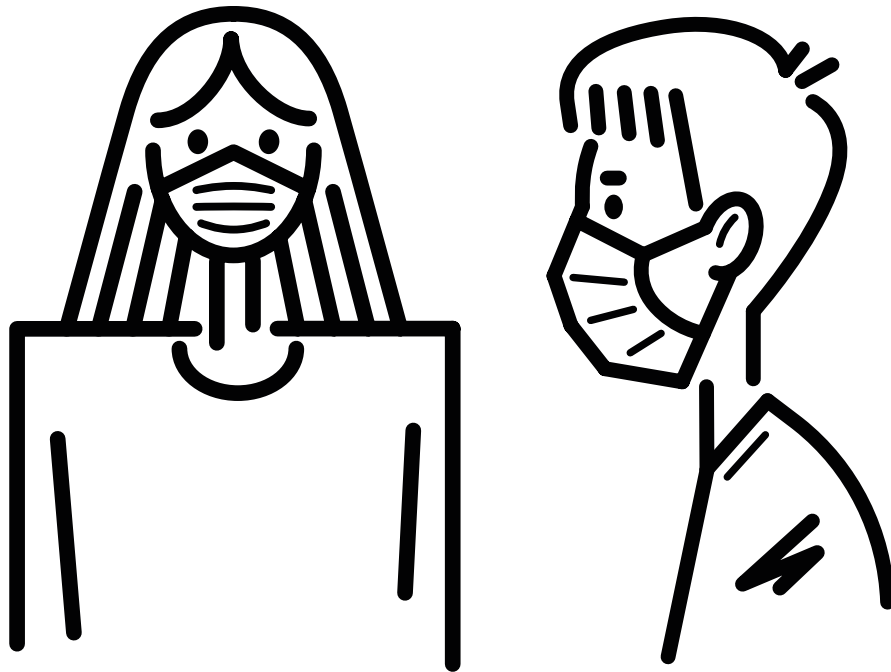
5. Do not touch the mask when you remove it; use the straps to loosen it

6. Wash or disinfect your hands.

---

From 27th April, it will be mandatory to wear a mask on local public transport and in shops. This means that, whenever we are in these places, we must either wear a mask or cover our mouth and nose with a scarf.

For more information on self-protection and the hygiene rules, please visit [augsburg.de/coronavirus](https://www.augsburg.de/coronavirus)



# **Wear a mask**

to cover your mouth  
and nose

---

From 27th April, it will be mandatory to wear a mask on local public transport and in shops. This means that, whenever we are in these places, we must either wear a mask or cover our mouth and nose with a scarf.

For more information on self-protection and the hygiene rules, please visit [augsburg.de/coronavirus](https://www.augsburg.de/coronavirus)